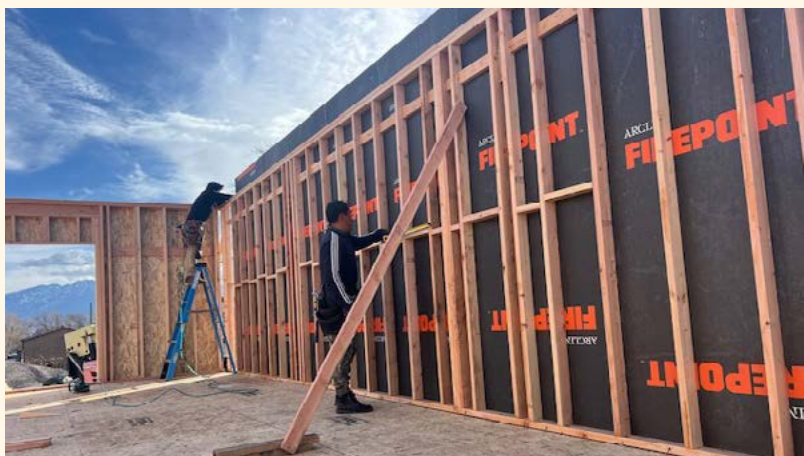


ARCLIN

FIREPOINT™ STALL FLAMES. SAVE LIVES.

Patented intumescent technology significantly slows down the spread of flames providing up to 53% more fire resistance than code.*

PROTECT WHAT MATTERS MOST



- Fire-resistant sheathing that combines advanced technology with superior performance
- Demonstrated to withstand fire for up to 90 minutes on 60-minute wall assemblies
- Class A Flame Spread Rating
ICC Certified ESR-5116 and ESL-1496
- Load bearing 1-hour and 2-hour rated wall assemblies
(ASTM E-119) ICC Certified, ESR-5116
- Type III & Type V Construction Zero lot line and Partition Wall Applications

*per ASTM E-119 in a third party accredited lab

GOING BEYOND CODE

	FIREPOINT 2500	FIRE-RATED OSB	FRT PLYWOOD
OVERALL FIRE RESISTANCE	EXCEEDS CODE BY UP TO 53%*	MEETS CODE PER MANUFACTURER	CODE COMPLIANT PER MANUFACTURER
BURN TIME TEST RESULTS**	01:29:49	00:43:50	00:27:49
NO EXTERIOR DRY WALL REQUIRED***	True	False	True****
PANEL ISN'T PRONE TO CRACKING OR CHIPPING	True	False	True
MEETS OSHA WEIGHT RECOMMENDATION FOR 1 PERSON LIFTING <50 LBS	Yes	No	Yes
NO PANEL STRENGTH REDUCTION	True	True	False
ELIMINATES GYPSUM IN EXTERIOR WALLS	Yes	Yes	No

* Per ASTM E-119 in a third party accredited lab.

** Burn testing completed at a third party accredited lab. Sheathing only on non-combustible framing.

*** For Type III load bearing exterior wall / 2 hr rated from both sides.

**** Only for select cladding: brick, stucco, etc.

FIREPOINT.ARCLIN.COM
CONTACT US: 404-334-6833

STRONG. DURABLE. EFFICIENT.

- Lightweight, easy to cut panel
- No chip or flake
- Minimal dust
- Superior weather resistance
- Remains square/flat
- No panel strength reduction

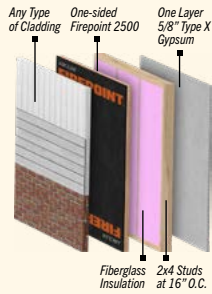
LESS MATERIAL. LESS WEIGHT. LESS LABOR.

- No exterior gypsum required
- Eliminates shaft liner in partition walls
- 1 person handling

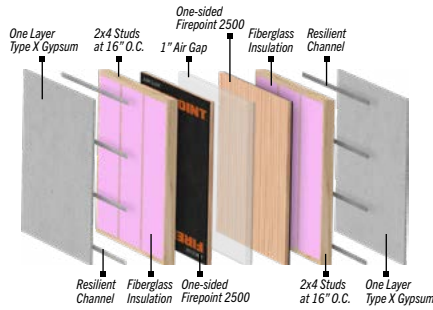
COMPLETE DESIGN FREEDOM

- Use ANY exterior cladding material
- Fiber cement, brick, vinyl siding, stone, engineering wood siding...

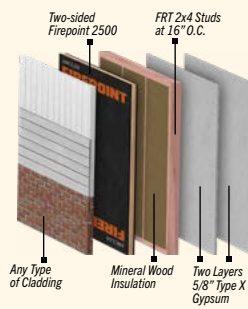
TYPE V 1 HR / 1 HR



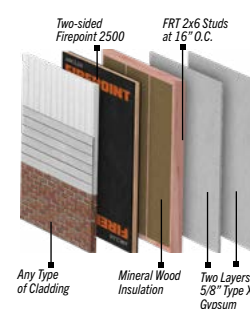
TYPE V PARTITION WALL



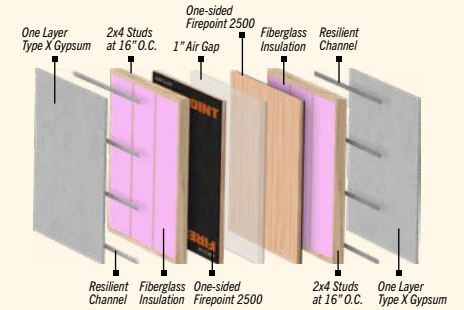
TYPE III 2 HR / 1 HR 2x4



TYPE III 2 HR / 2 HR 2x6



TYPE III PARTITION WALL



RESIDENTIAL: TYPE V SINGLE FAMILY HOME FIRE RATED WALL ASSEMBLIES



RESIDENTIAL: TYPE V TOWNHOME FIRE RATED WALL ASSEMBLIES



COMMERCIAL: TYPE III CONDOMINIUM FIRE RATED WALL ASSEMBLIES

